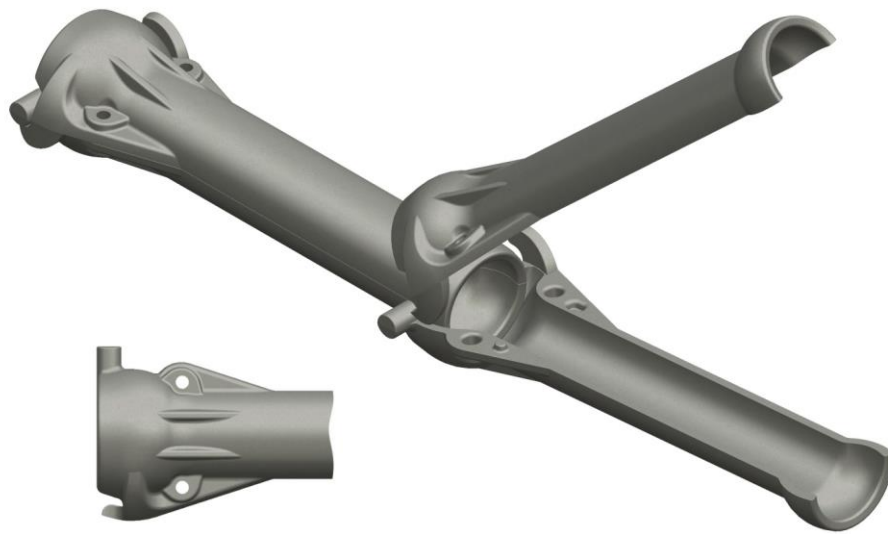


Protectorshell-SP (Single Part)

Traditional clip-together Protectorshell convenience in a single-part design to minimize inventory and simplify underwater laying in poor visibility, etc. The clean, robust design you have come to expect from Protectorshell with added convenience and simplicity.



PS076-SP/500/09

Specifications	
Segment Length - Overall	555mm
Effective Installed Length/segment pair	500mm
Minimum Internal Diameter	76mm - for cables up to 66mm diameter
Maximum External Diameter	190mm (widest points)
Wall Thickness	9mm
Material	Ductile Iron to ISO 1083
Tensile Strength / Elongation	400MPa / 15% elongation
Impact Resistance	>7.5kJ
Minimum Bend Diameter	4.0m
Weight per Segment	12.4kg
Weight per installed metre (air)	24.8kg
Weight per installed metre (water)	21.4kg
Fasteners	M12x50 Bolts and M12 Nyloc Nuts – Material: Stainless Steel G316/A4 Recommended usage: 1 pair per 10 metres of installed pipe

Protectorshell SL

C Regata Cutty Sark No 21 4 IZ 15002 La Coruña, Spain
T: +34 8 8124 1115 F: +34 8 8192 4978

www.protectorshell.com

MS Diversified Services Pty Limited

PO Box 150 Maroubra NSW 2035 Australia
1135 Anzac Parade, Matraville, NSW 2036 Australia
T: +61 2 9694 1004 F: +61 2 9314 3526